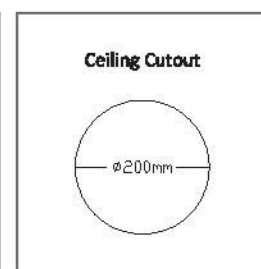
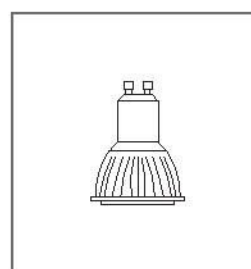
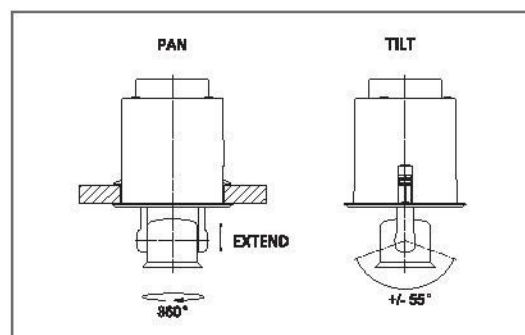
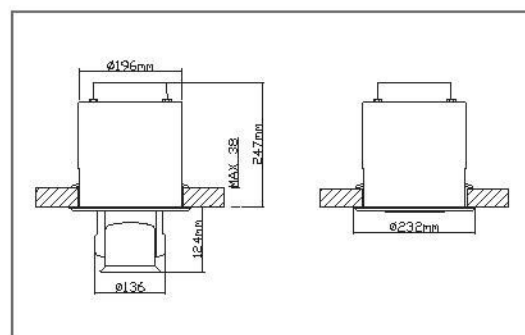


Product Specifications

Construction:	Metal lamp housing and plastic body with powder coated finish
Color:	White, black, or color on request
Size:	232mm (D) ¹ x 250mm (H) ²
Voltage:	120-240V AC, 50/60Hz (Specify required rate when ordering)
Remote control distance:	Min. 10 meters (Slight differences may occur. Depending on individual site conditions)
Lamp² & Wattage:	COB LED, 5W, GU10
Dimmable:	Internal dimming
Movement:	<ul style="list-style-type: none"> • Pan movement: 360° • Tilt movement: +/- 55°
Mounting:	Recessed, lamp head slides out vertically when operating
Max. ceiling thickness:	38mm
Min. ceiling clearance:	260mm
Ceiling cutout:	Φ 200mm
Control options:	Hand-held remote control

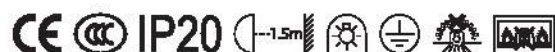


Notes: ¹ Bezel is included for diameter measurement. Housing's diameter is 196mm only.

² The height is measured when lamp head is completely concealed in the ceiling.

³ Lamp is excluded but options are available to order separately.

⁴ Refer to separate section for photometric details.



For further information contact:

CTA CONTROL TECH ASIA PTE. LTD.
Lighting & Control for Architectural & Theatrical Spaces

45 Genting Lane #03-02, Genting Complex, Singapore 349557

Tel: +65-67420181 Fax: +65-67491681

Email: info@controltechasia.com

Website: www.controltechasia.com

Company No.: 200802342R